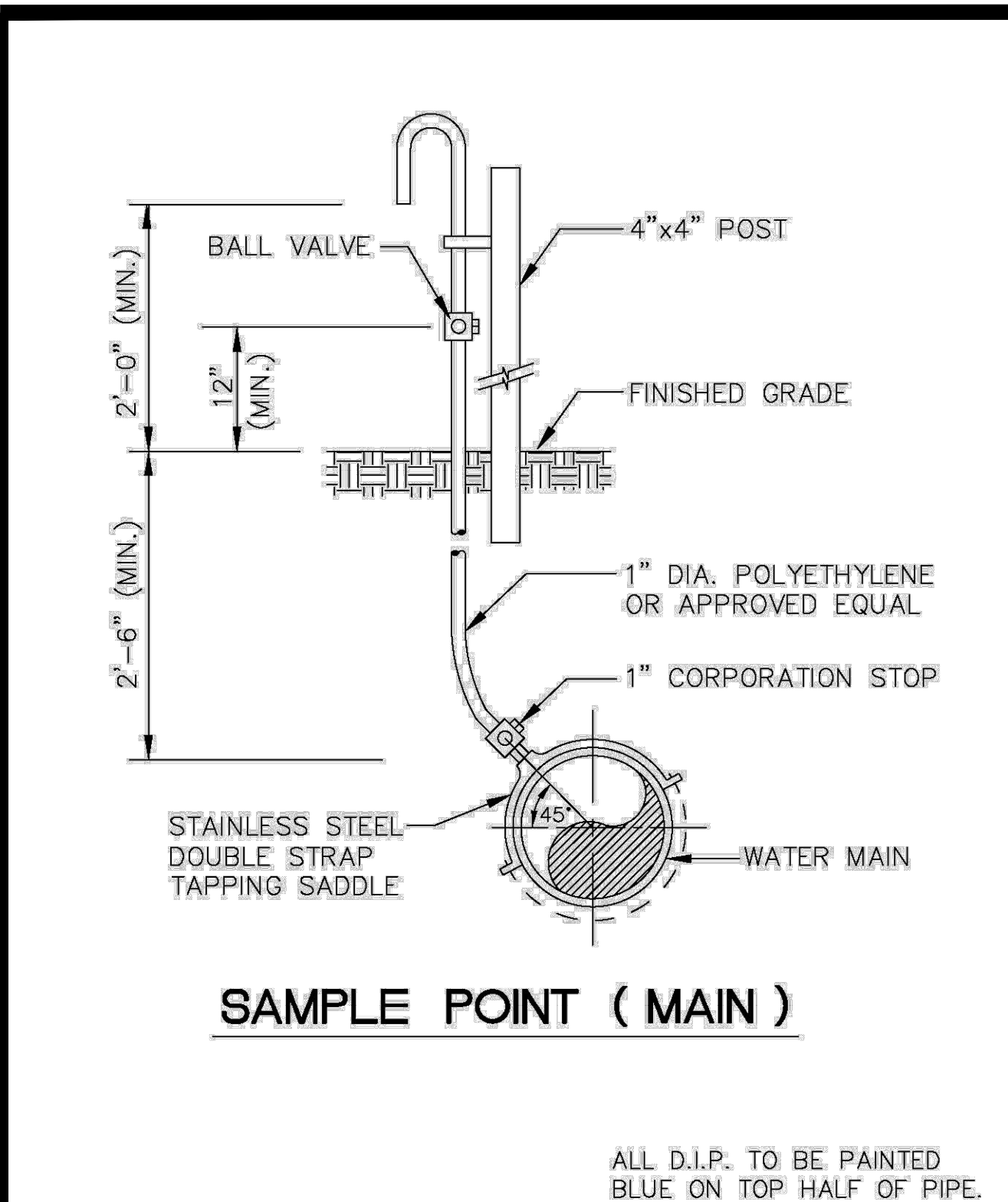
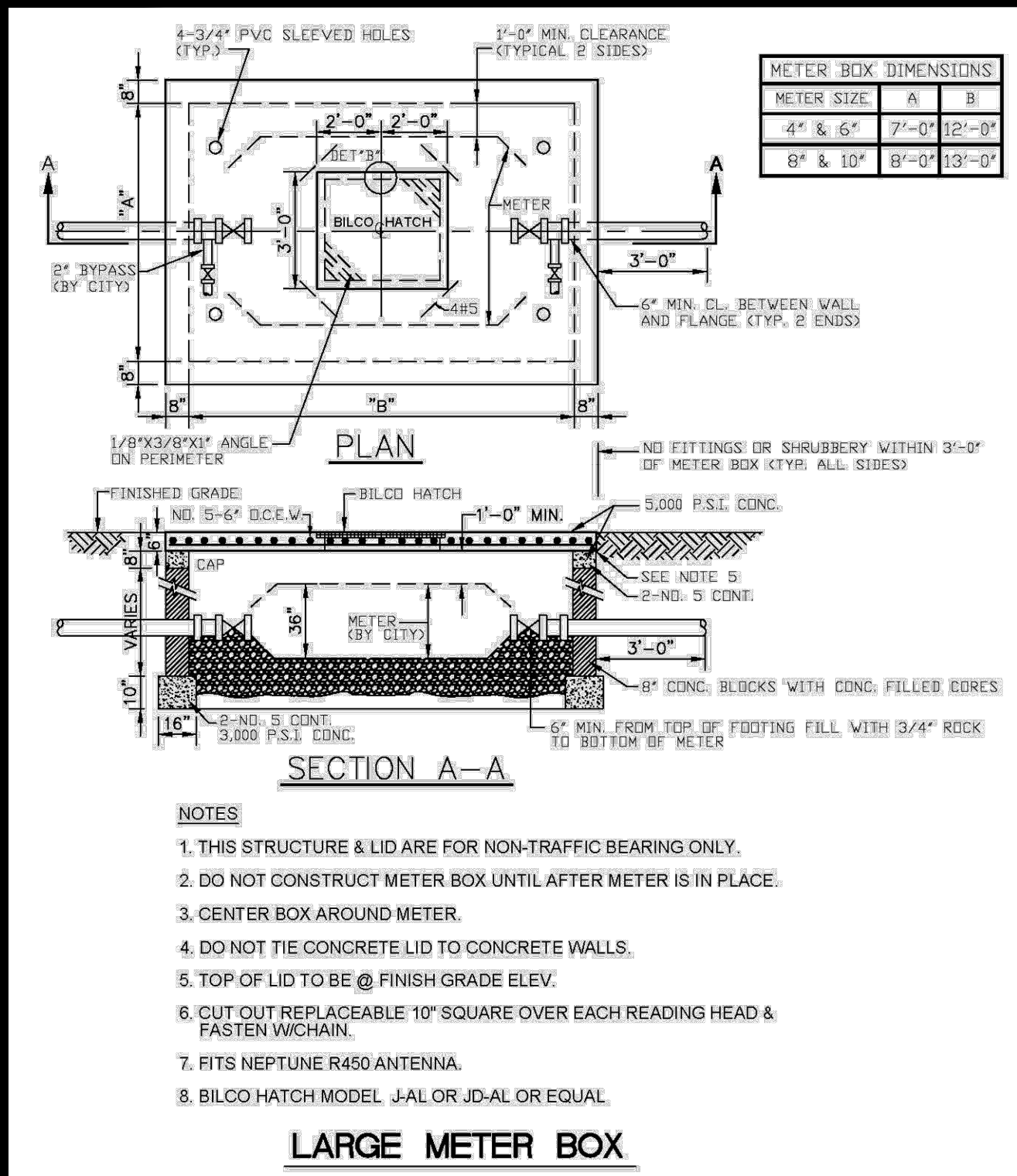


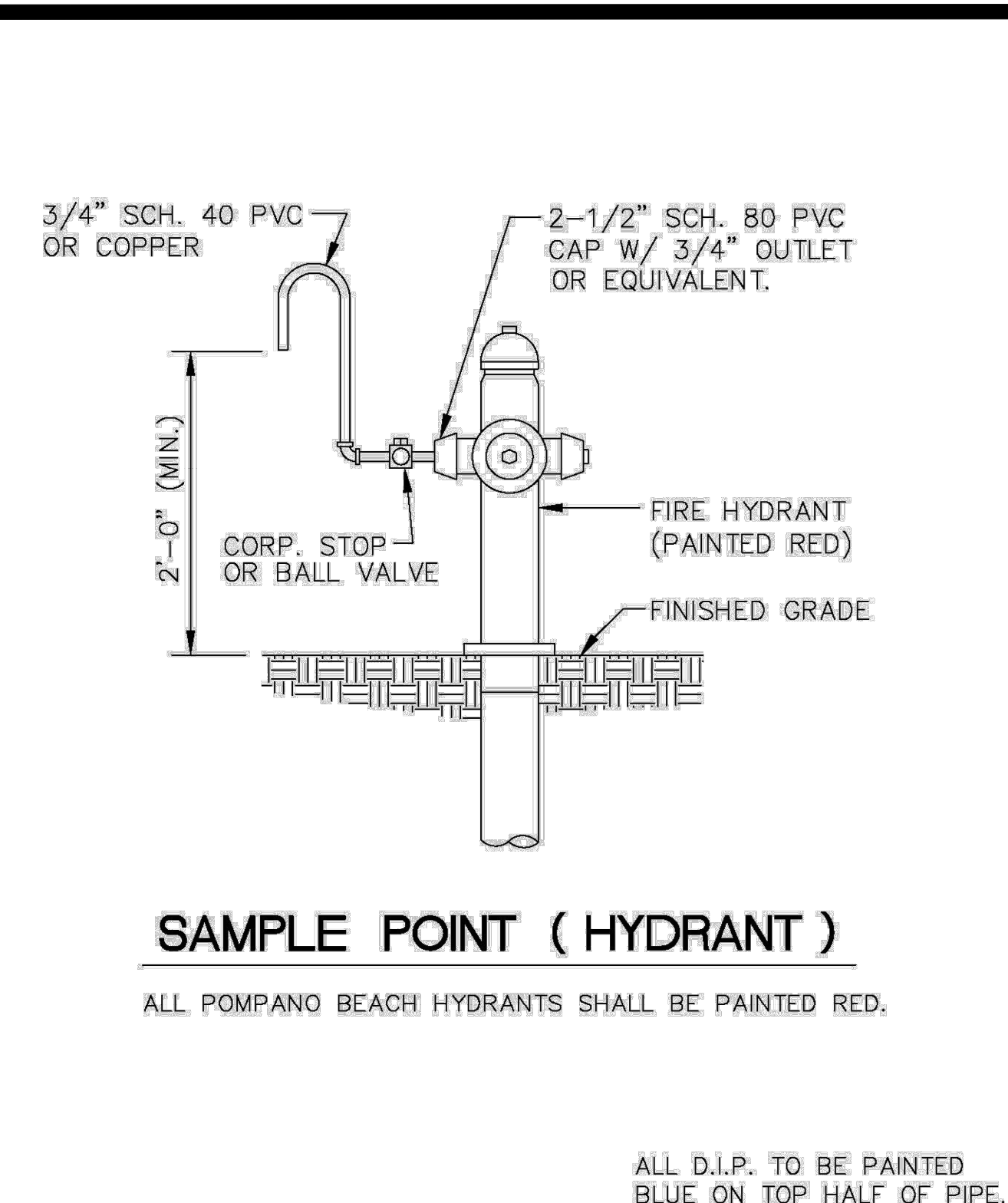
Noted: This drawing was prepared by KIMLEY-HORN AND ASSOCIATES, INC. for MODERA POMPANO BEACH. It is intended only for the specific purpose and client for which it was prepared. Reuse of and improper reliance on this document without written authorization and adaptation by Kimley-Horn and Associates, Inc. shall be without liability to Kimley-Horn and Associates, Inc.



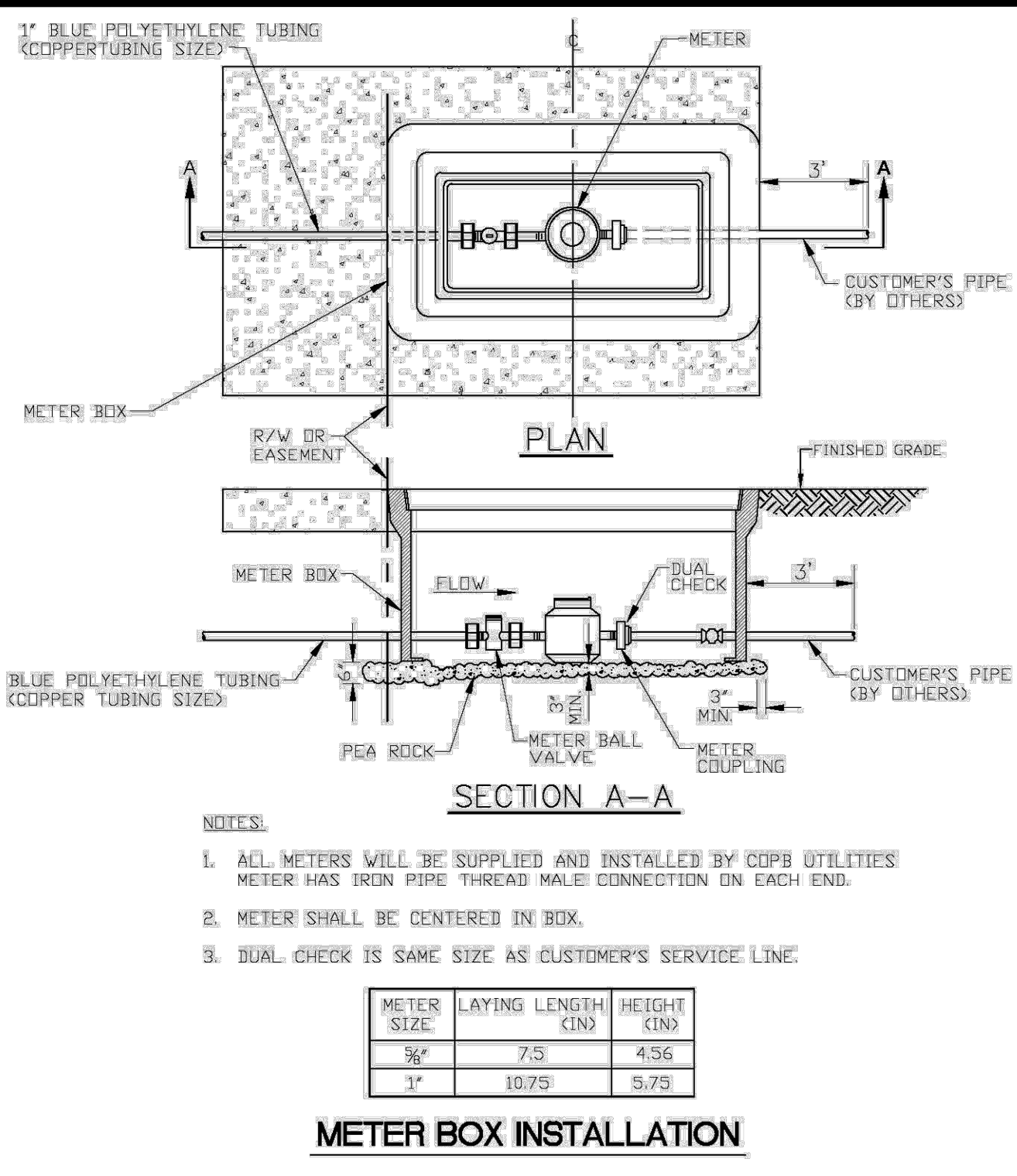
ENGINEERING STANDARDS 2025			
REVISIONS	ENGINEERING DIVISION	SAMPLE POINT (MAIN)	
BY DATE	CITY OF POMPANO BEACH		
S.S. 04-2005			
	SCALE: N.T.S.	DATE: MAY 2022	DWG. NO. 100-1



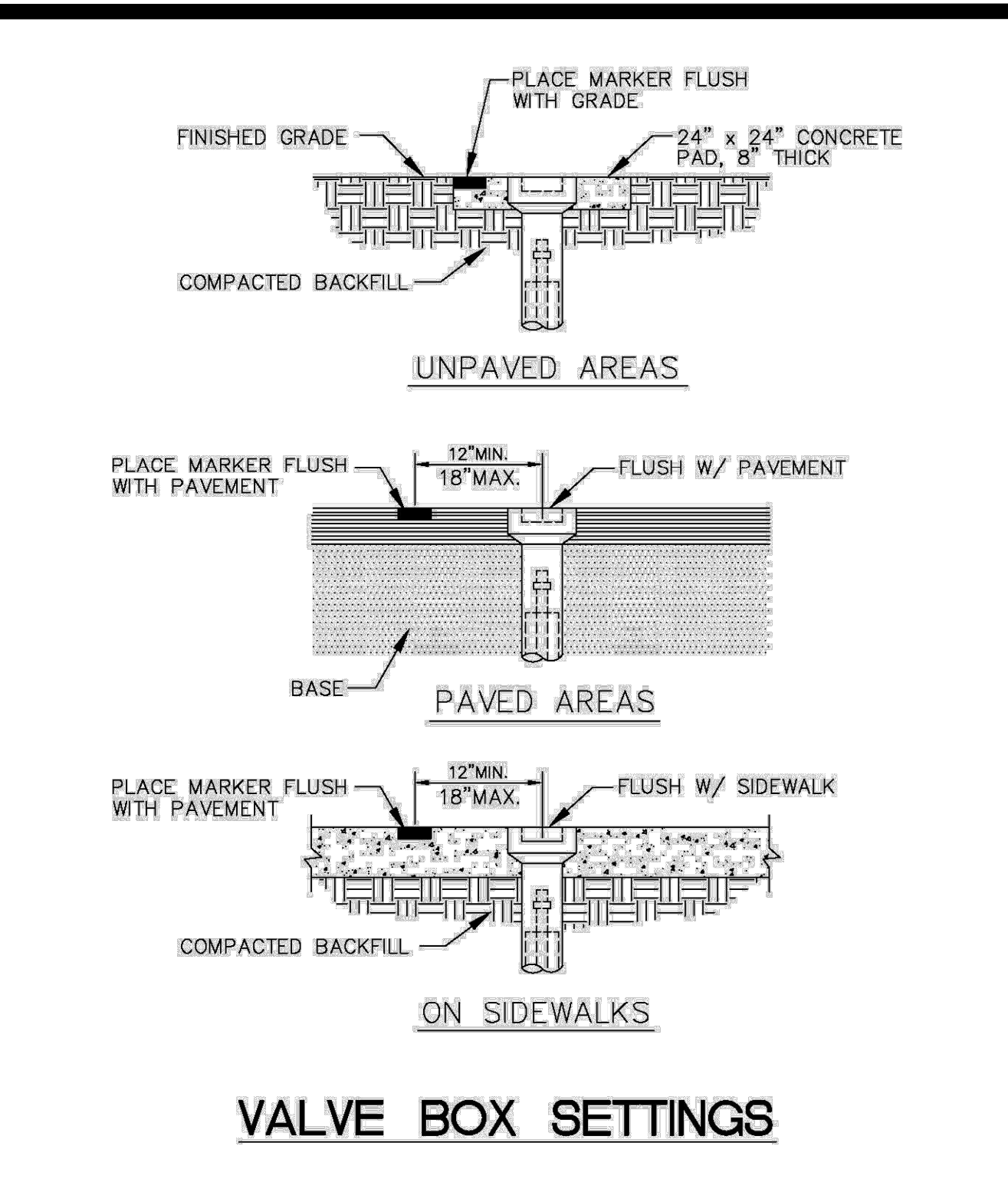
ENGINEERING STANDARDS 2025			
REVISIONS	ENGINEERING DIVISION	LARGE METER BOX	
BY DATE	CITY OF POMPANO BEACH		
T.W. 03-2008			
S.S. 01-2012		DATE: MAY 2022	DWG. NO. 105-1
S.S. 11-2012	SCALE: N.T.S.		



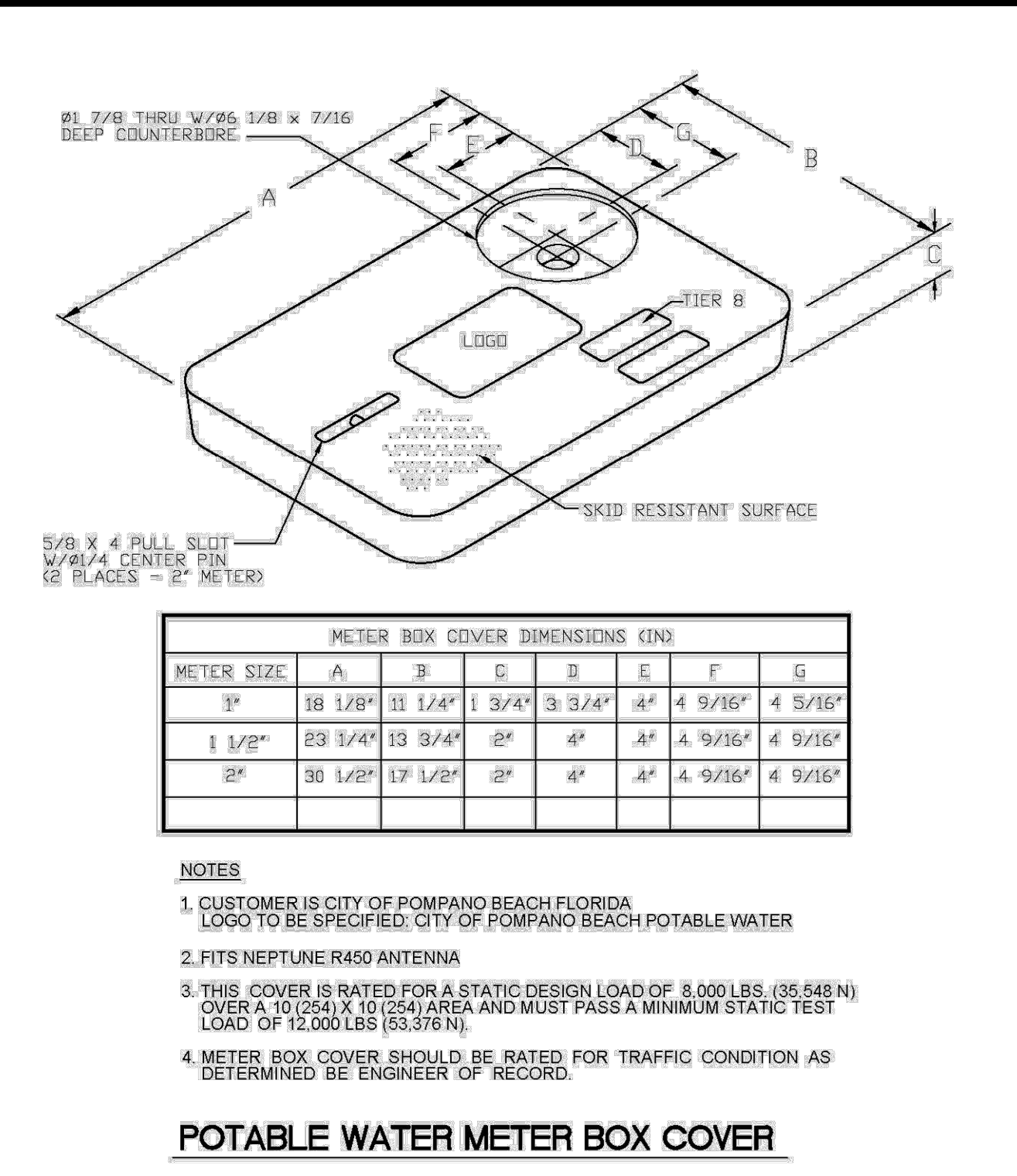
ENGINEERING STANDARDS 2025			
REVISIONS	ENGINEERING DIVISION	SAMPLE POINT (HYDRANT)	
BY DATE	CITY OF POMPANO BEACH		
S.S. 04-2005			
	SCALE: N.T.S.	DATE: MAY 2022	DWG. NO. 101-1



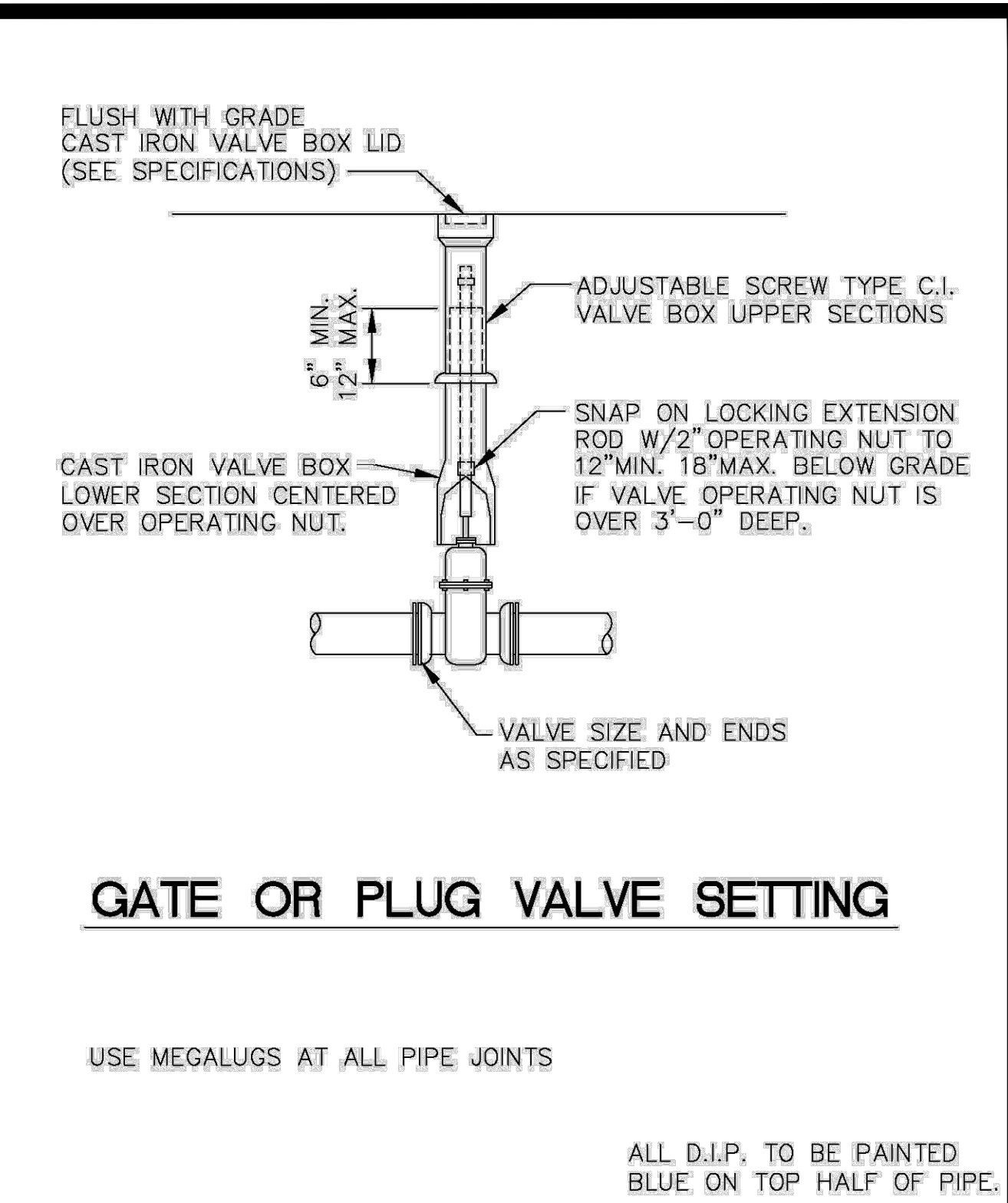
ENGINEERING STANDARDS 2025			
REVISIONS	ENGINEERING DIVISION	METER BOX INSTALLATION FOR 5/8" AND 1" METERS	
BY DATE	CITY OF POMPANO BEACH		
S.S. 11-2012		DATE: JAN. 2022	DWG. NO. 105-2
	SCALE: N.T.S.		



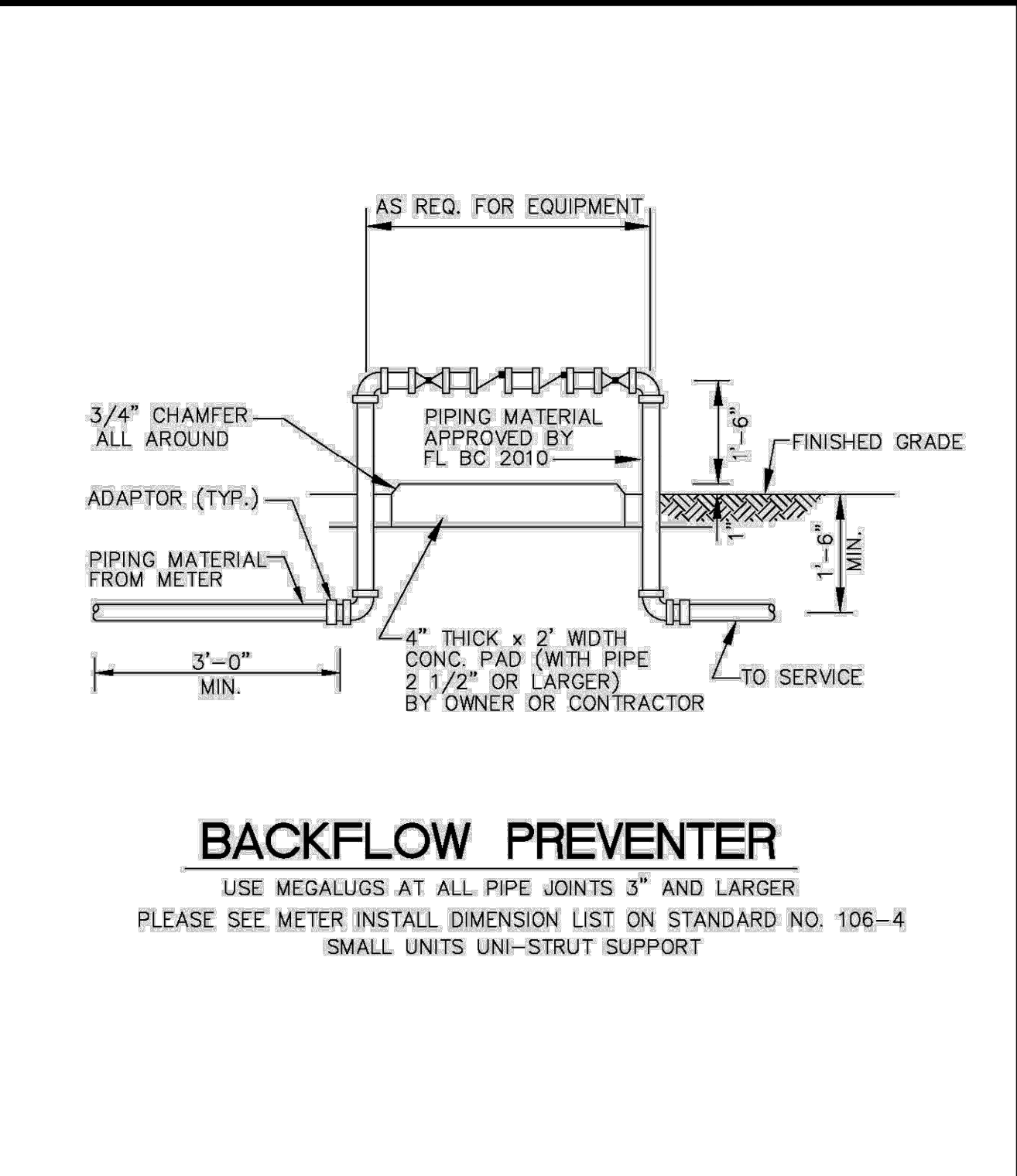
ENGINEERING STANDARDS 2025			
REVISIONS	ENGINEERING DIVISION	VALVE BOX SETTINGS	
BY DATE	CITY OF POMPANO BEACH		
S.S. 04-2005			
	SCALE: N.T.S.	DATE: MAY 2022	DWG. NO. 102-1



ENGINEERING STANDARDS 2025			
REVISIONS	ENGINEERING DIVISION	TYPICAL METER BOX COVER	
BY DATE	CITY OF POMPANO BEACH		
S.S. 11-2012		DATE: JAN. 2022	DWG. NO. 105-3
	SCALE: N.T.S.		



ENGINEERING STANDARDS 2025			
REVISIONS	ENGINEERING DIVISION	GATE OR PLUG VALVE SETTINGS	
BY DATE	CITY OF POMPANO BEACH		
S.S. 04-2005			
T.W. 11-2007	SCALE: N.T.S.	DATE: MAY 2022	DWG. NO. 103-1



ENGINEERING STANDARDS 2025			
REVISIONS	ENGINEERING DIVISION	BACKFLOW PREVENTER	
BY DATE	CITY OF POMPANO BEACH		
T.W. 04-2008		DATE: MAY 2022	DWG. NO. 106-1
S.S. 03-2009	SCALE: N.T.S.		
S.S. 11-2012			
S.S. 01-2013			